

Aachen

(GMP & FDA) Method development and Validation, Nitrosamines, Cleaning Validation, **Extractables & Leachables**



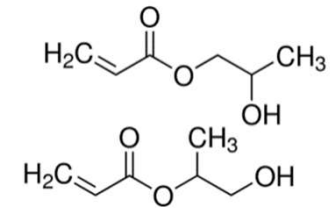
Berlin

(GMP & FDA) Quality Control & **Stability studies**
Climatic Chambers



Taunusstein

(GMP & FDA & GLP & 17025)
Quality Control & Microbiology
Special analysis



Wiesbaden

(GMP) Extractables-Leachables Testing



Dresden

DIN EN ISO 17025
Failure Mode, Particles, Topographical Methods

Taunusstein (Non-GMP)

- Target analysis (PVDF, PFCA, Nitrosamines)
- Medical device testing (in-vitro)

Wiesbaden / Aachen

- Extractables studies (e.g. single-use systems (SUS), container closure systems, materials)
- Simulated-use studies
- Leachables screening
- Medical device testing (10993)
- Impurity profiling / R&D studies root-cause support
- E&L consultancy (study concepts, risk analysis support, E&L assessment)



Berlin

- Target analysis (ICP backup, ICP-OES)
- Stability studies / Climatic Chambers
- Method development
- Method validation
- Leachables targeted studies

Dresden (Non-GMP)

- Particle identification
- Particle distribution
- Failure mode analysis
- Physical-chemical resistance